

Figure S1

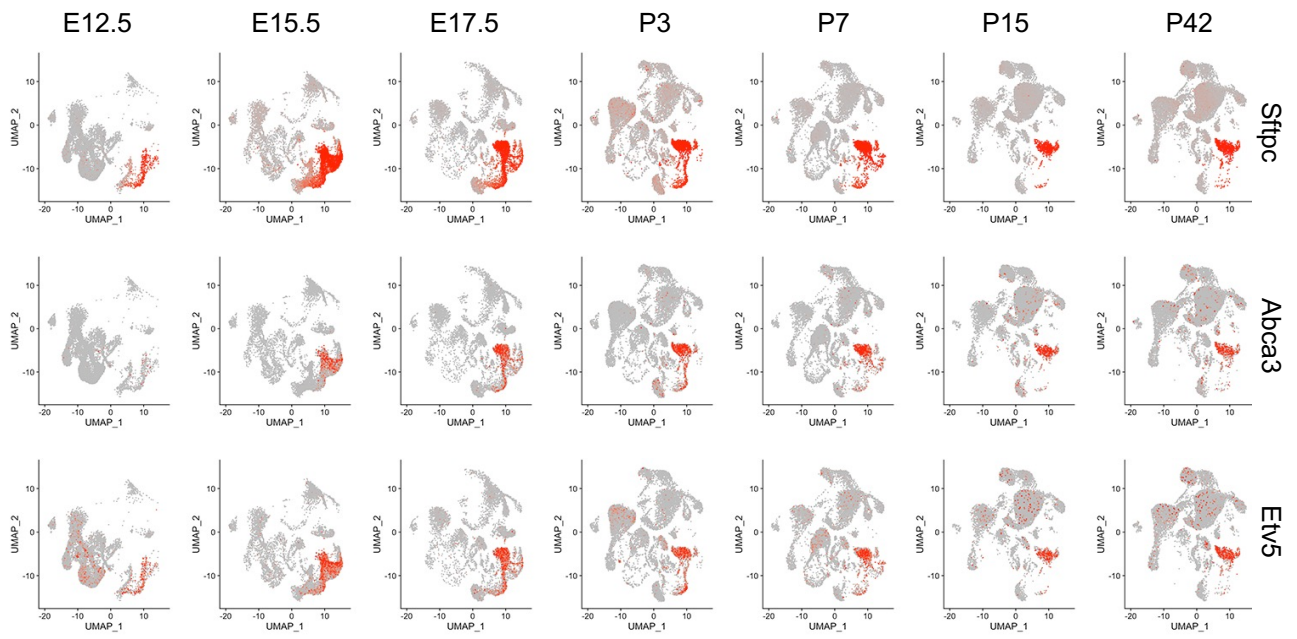


Figure S1. Transcriptional of *Sftpc*, *Abca3*, and *Etv5* in embryonic and postnatal mouse lungs by published single cell RNA-seq dataset GSE149563.

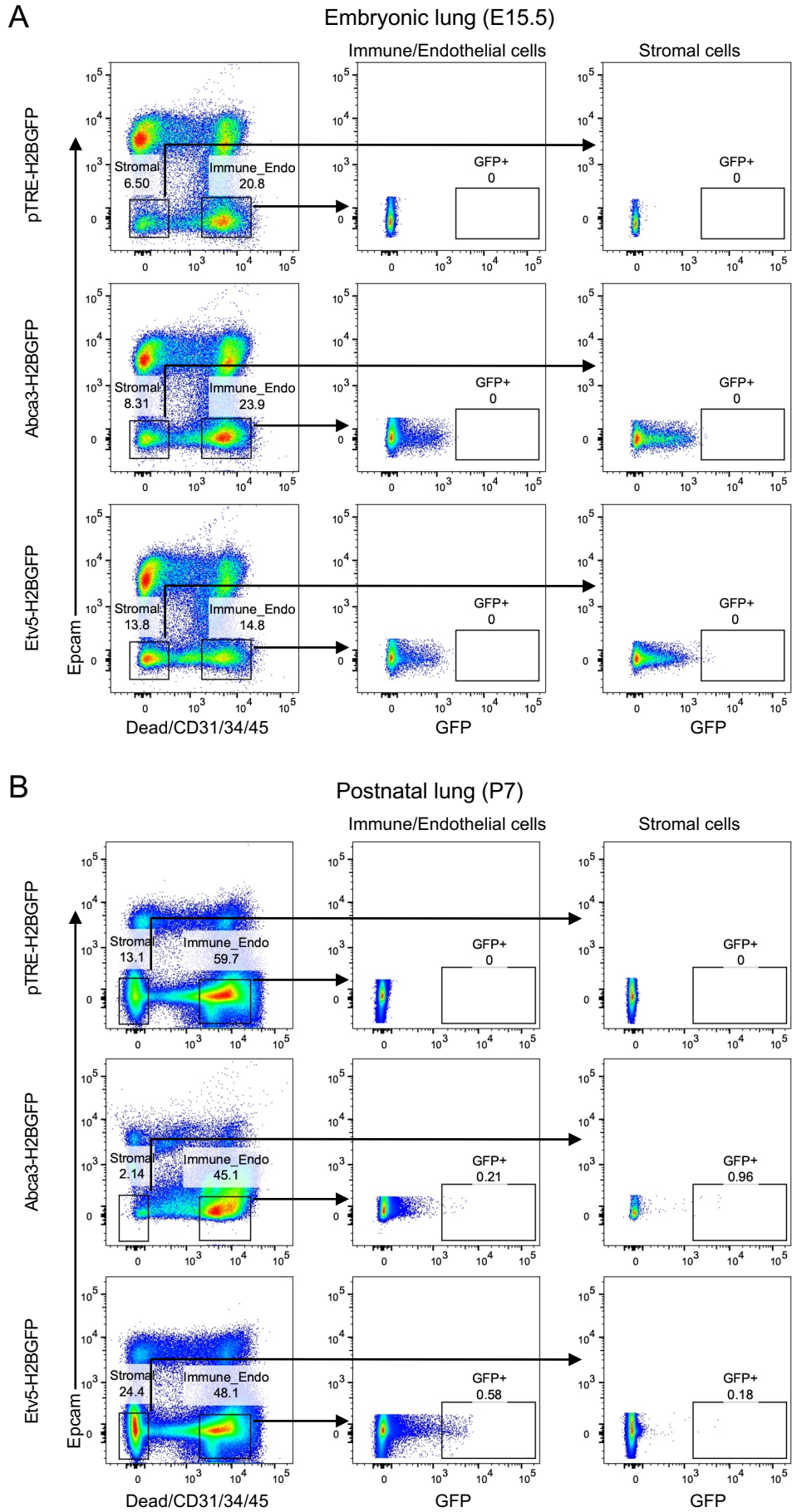


Figure S2. Representative flow cytometry plots showing the gating strategy for GFP⁺ cells in CD31/34/45⁺ mixed immune/endothelial cells and in double negative stromal cells in embryonic (A, E15.5) and postnatal (B, P7) *Abca3-H2BGFP* and *Etv5-H2BGFP* lungs, and littermate controls (*pTRE-H2BGFP*).

Figure S3

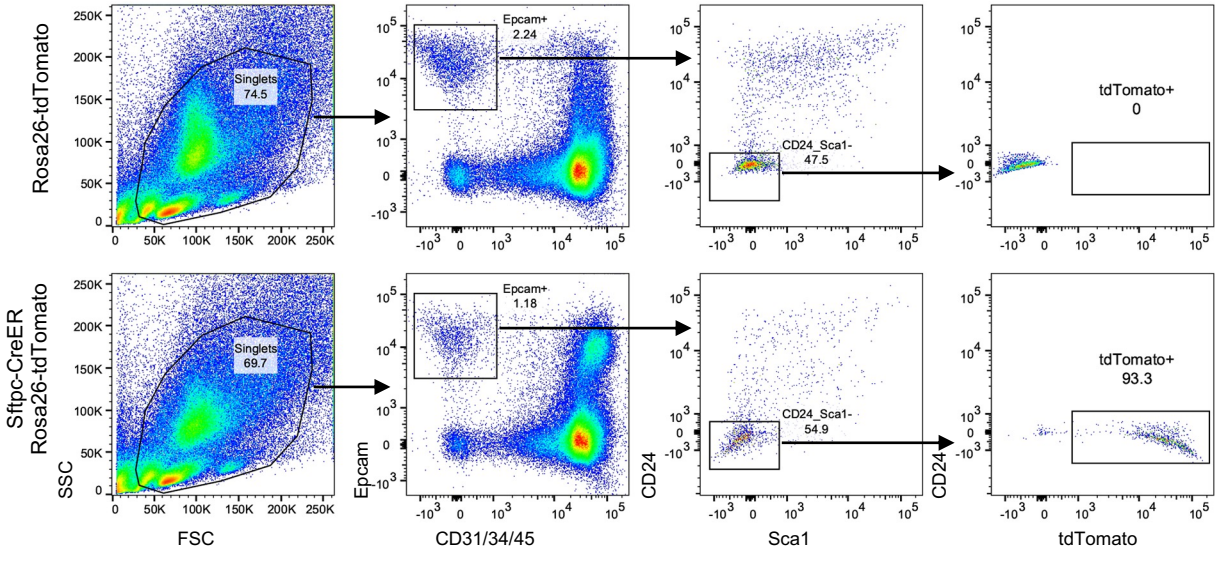


Figure S3. Representative flow cytometry plots showing the gating strategy for tdTomato⁺ cells in lungs from uninjured adult *Sftpc-CreER*; *Rosa26-tdTomato* and littermate control (*Rosa26-tdTomato*) mice after Tamoxifen induction.

Figure S4

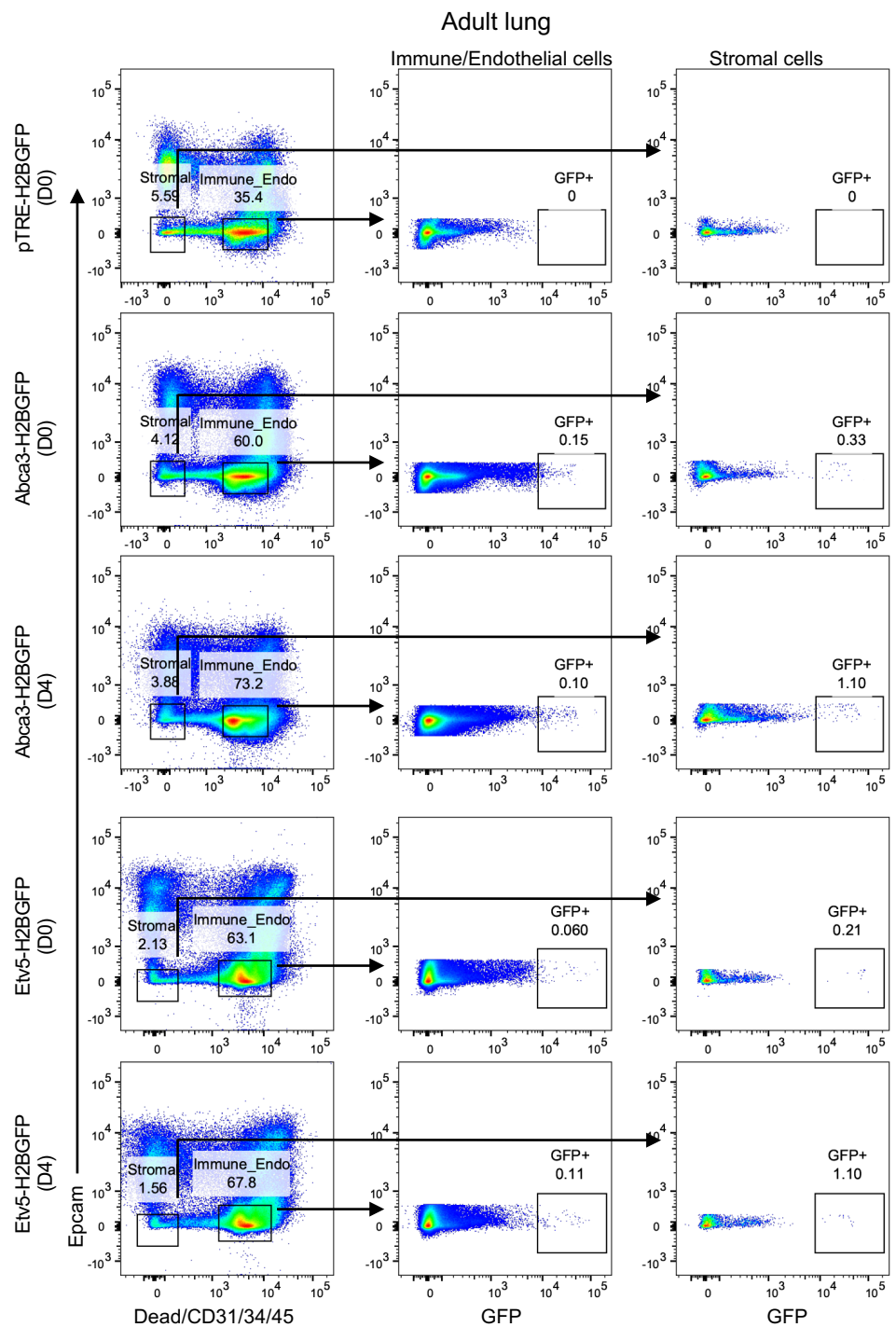


Figure S4. Representative flow cytometry plots showing the gating strategy for GFP⁺ cells in CD31/34/45⁺ mixed immune/endothelial cells and in double negative stromal cells in lungs from adult *Abca3-H2BGFP* and *Etv5-H2BGFP*, and littermate control (*pTRE-H2BGFP*) mice before (D0) and 4 days after bleomycin injury (D4).