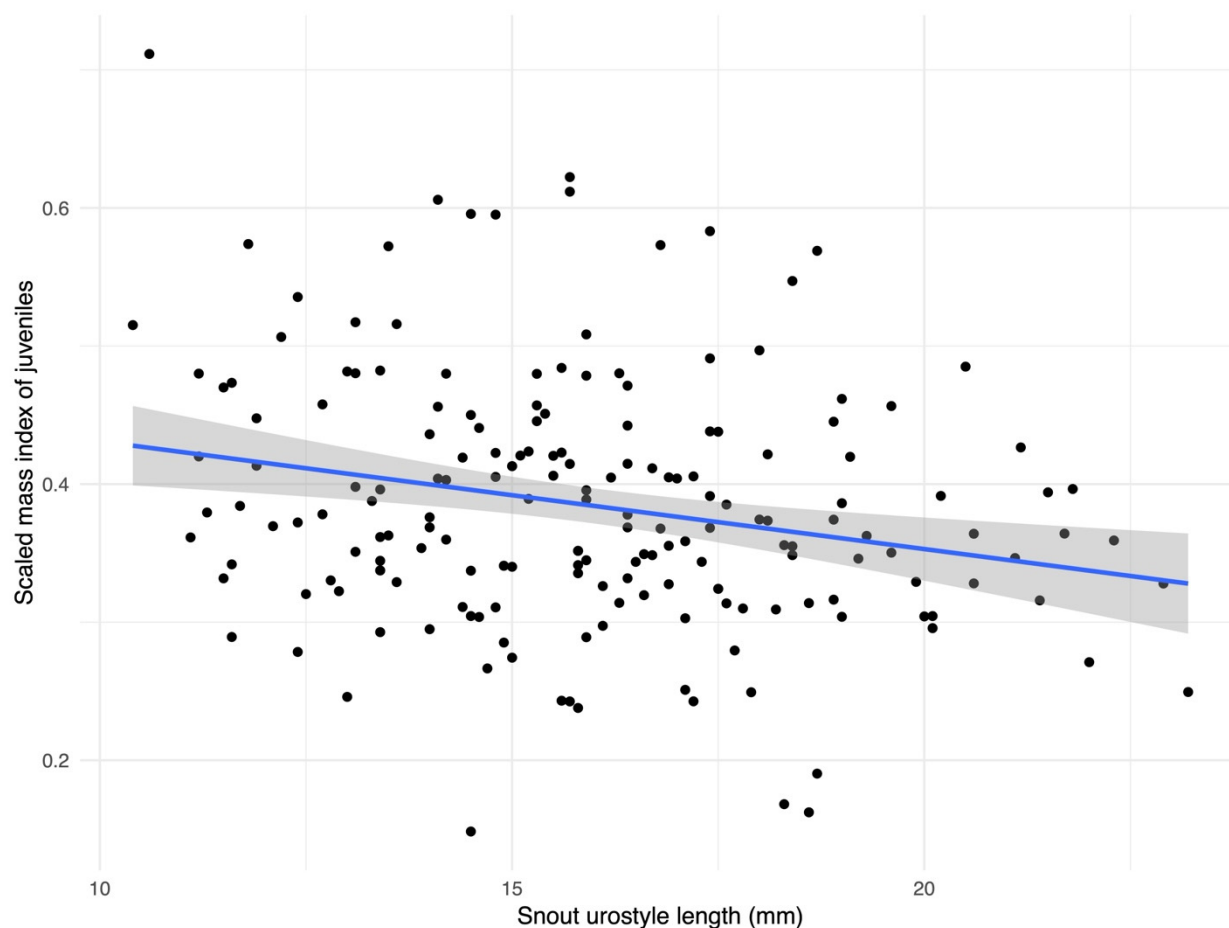
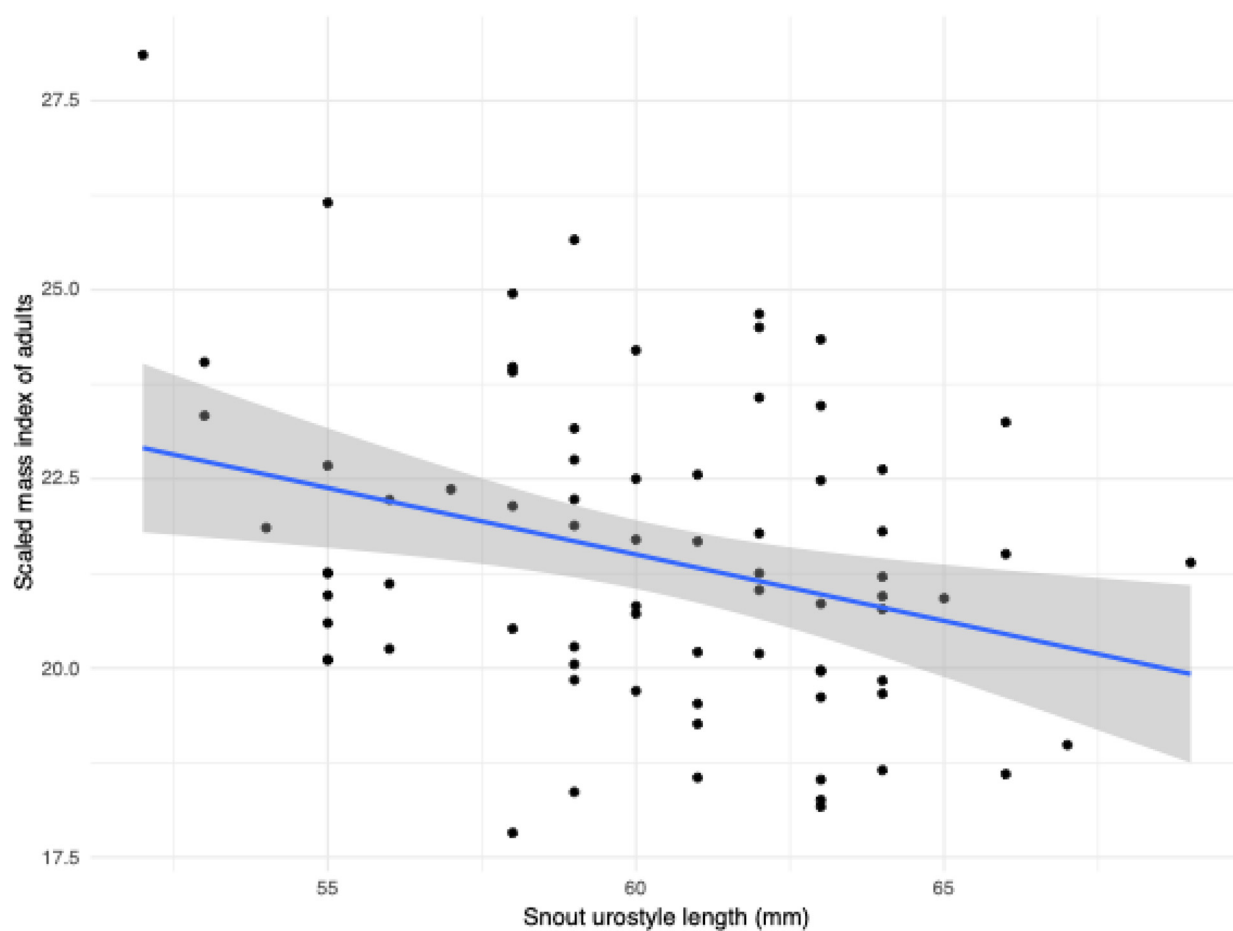


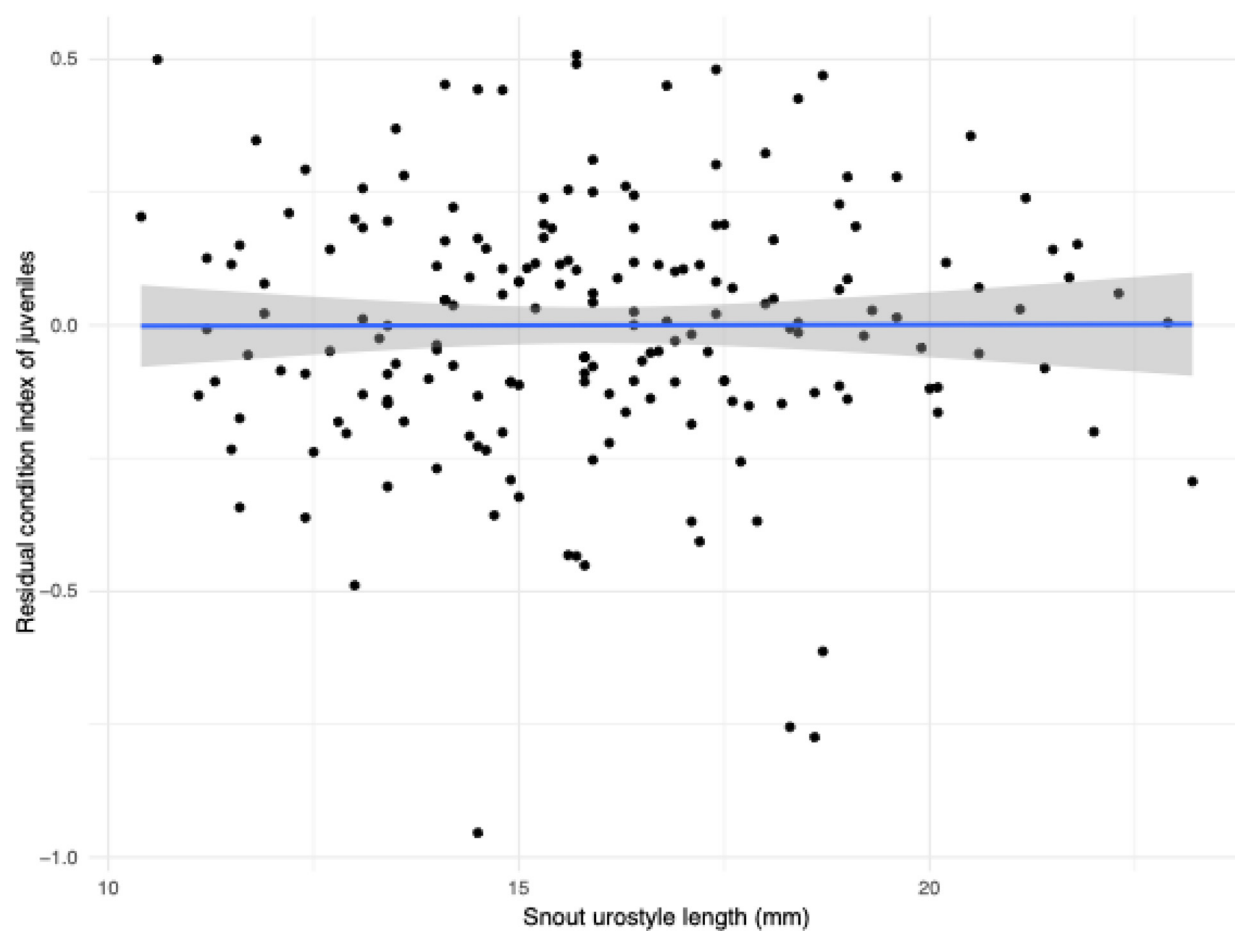
## Testing Photogrammetry in Assessing Health of Houston Toads (*Bufo* [=Anaxyrus] *houstonensis*)



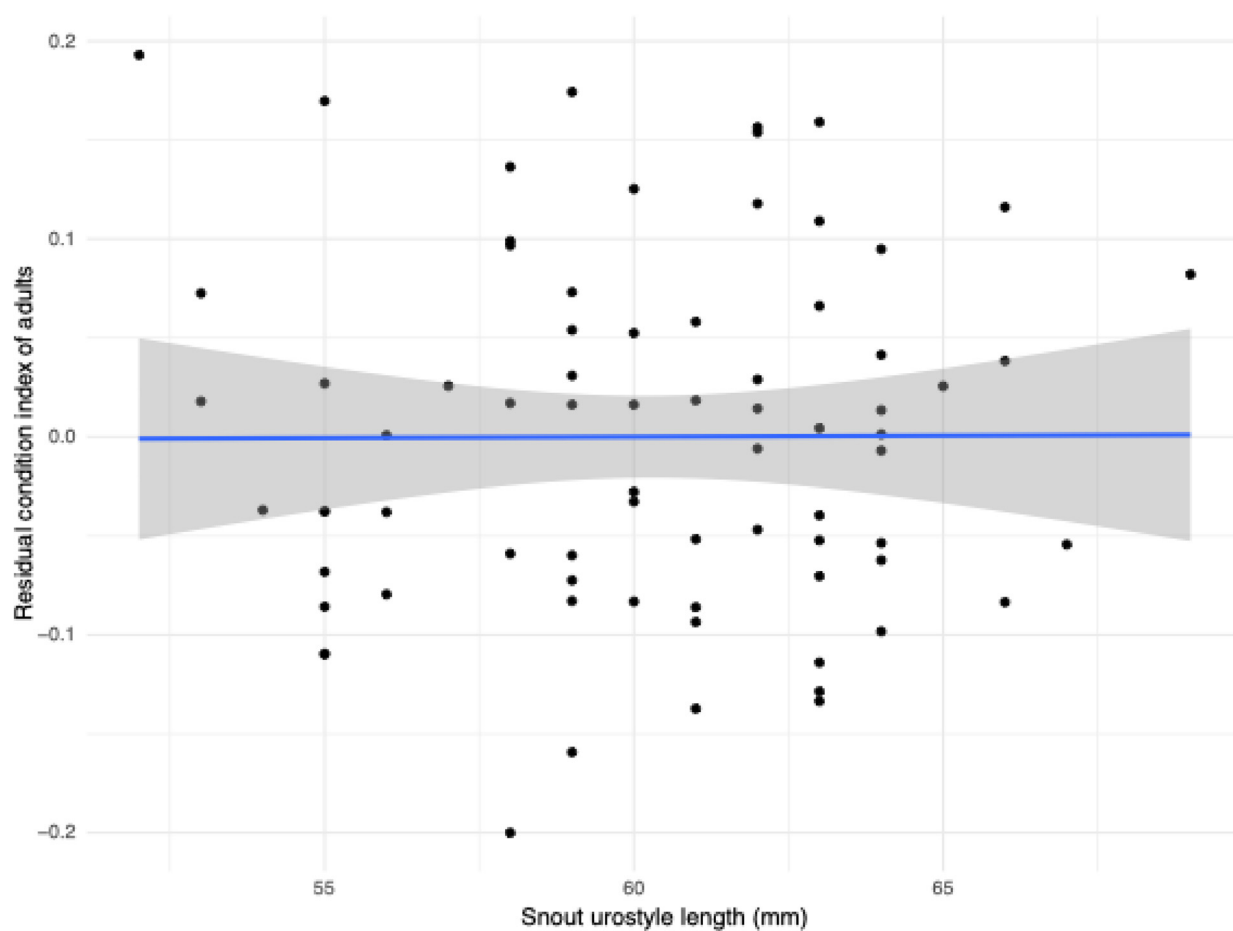
**Figure S1.** Plot representing correlation of scaled mass index (SMI) values and snout urostyle length (SUL) in juvenile Houston toads (*Bufo* [=Anaxyrus] *houstonensis*). We observed a significant and negative correlation of SMI values with SUL in this life stage.



**Figure S2.** Plot representing correlation of scaled mass index (SMI) values and snout urostyle length (SUL) in adult Houston toads (*Bufo* [=Anaxyrus] *houstonensis*). We observed a significant and negative correlation of SMI values with SUL in this life stage.



**Figure S3.** Plot representing correlation of residual condition indices and snout urostyle length (SUL) in juvenile Houston toads (*Bufo* [=Anaxyrus] *houstonensis*). We did not observe a significant correlation of residual index values with SUL in this life stage, indicating this condition index is independent of body size.



**Figure S4.** Plot representing correlation of residual condition indices and snout urostyle length (SUL) in adult Houston toads (*Bufo* [=Anaxyrus] *houstonensis*). We did not observe a significant correlation of residual index values with SUL in this life stage, indicating this condition index is independent of body size.